

KEYING OPTION A

KEYING OPTION B

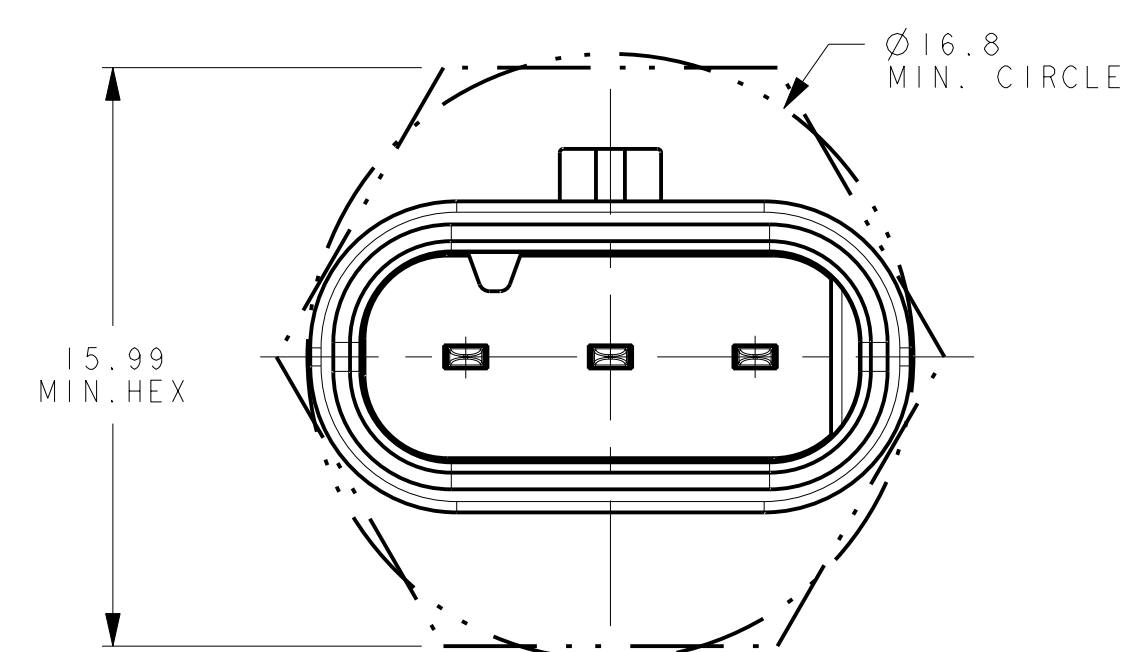
KEYING OPTION C

KEYING OPTION D

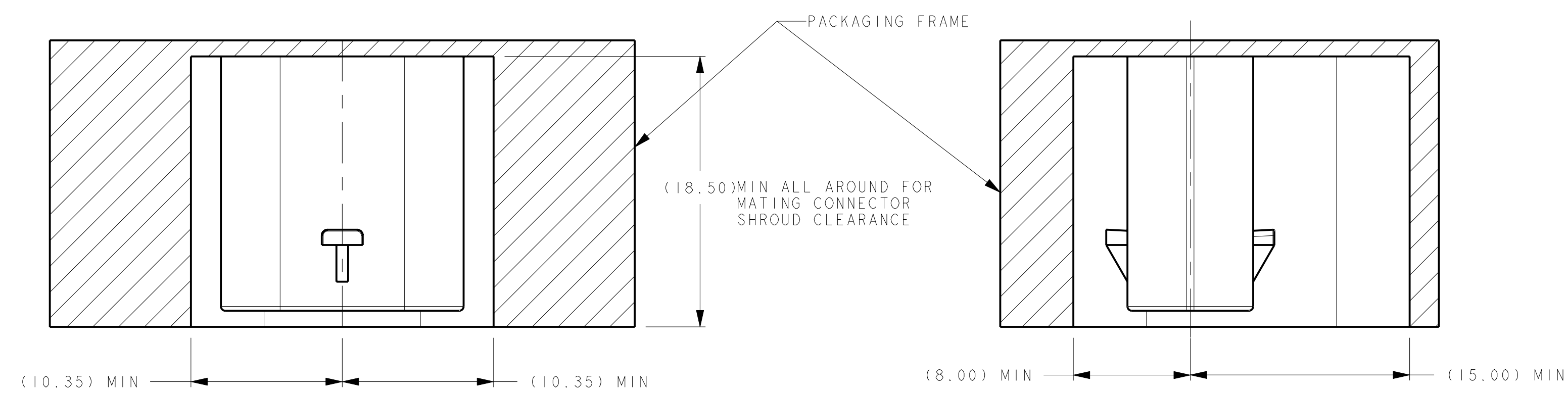
KEYING OPTION E

KEYING OPTION F

POLARIZATION VIEWS



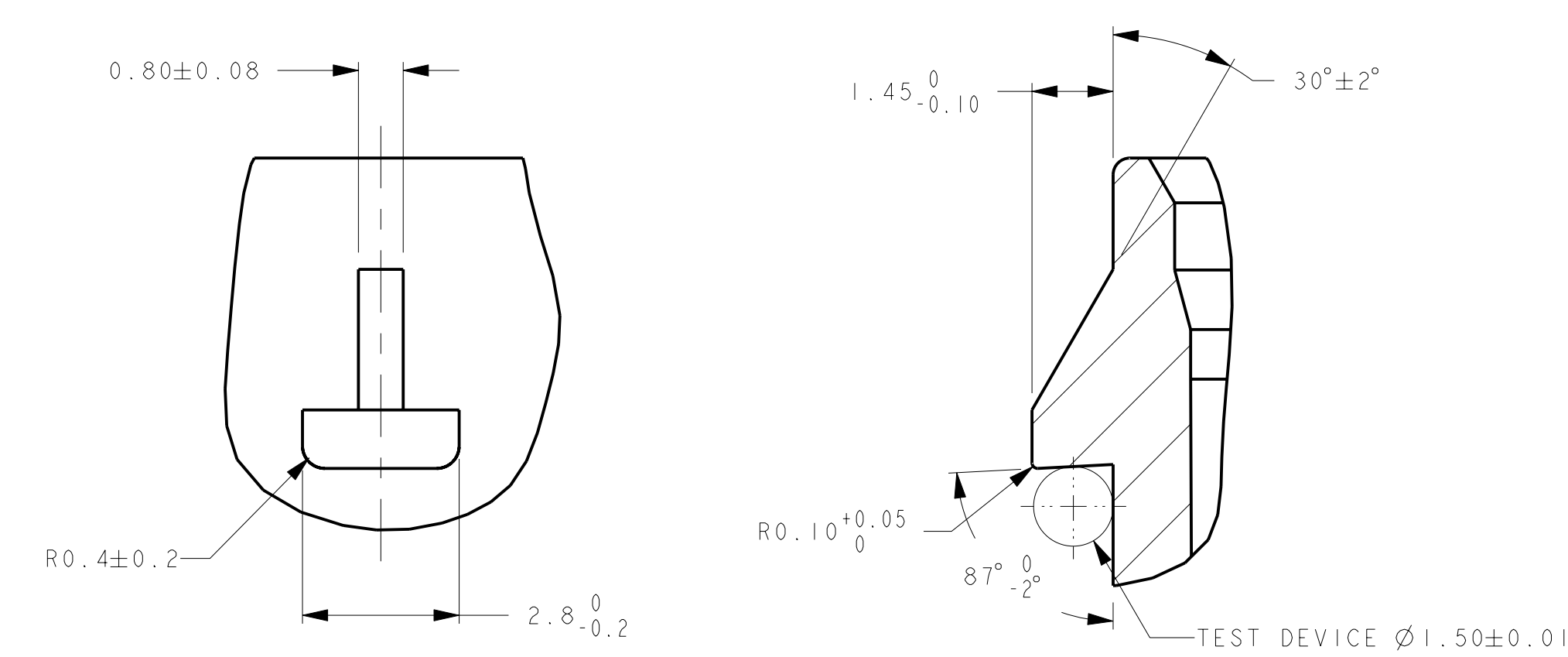
MINIMUM FIT SIZE -PROVIDED FOR
INFORMATION PURPOSE ONLY
(BASED ON MAXIMUM MATERIAL CONDITION)



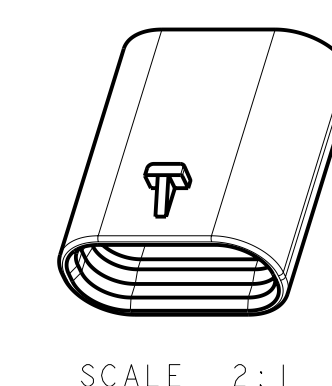
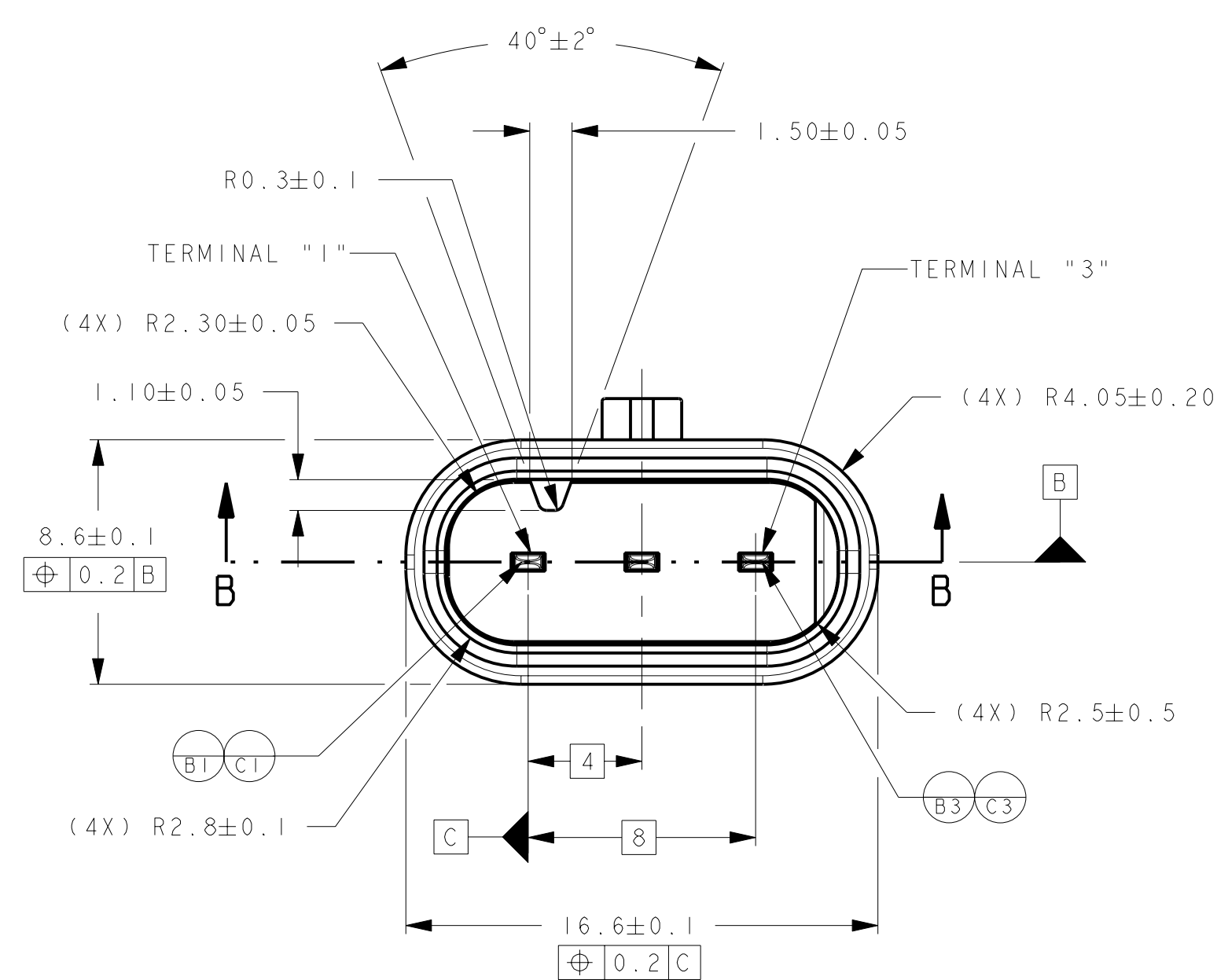
IF THE HEADER IS RECESSED INTO A POCKET, THESE DIMENSIONS REPRESENT THE MINIMUM CLEARANCE REQUIRED FOR THE MATING CONNECTOR SHROUD

NOTICE

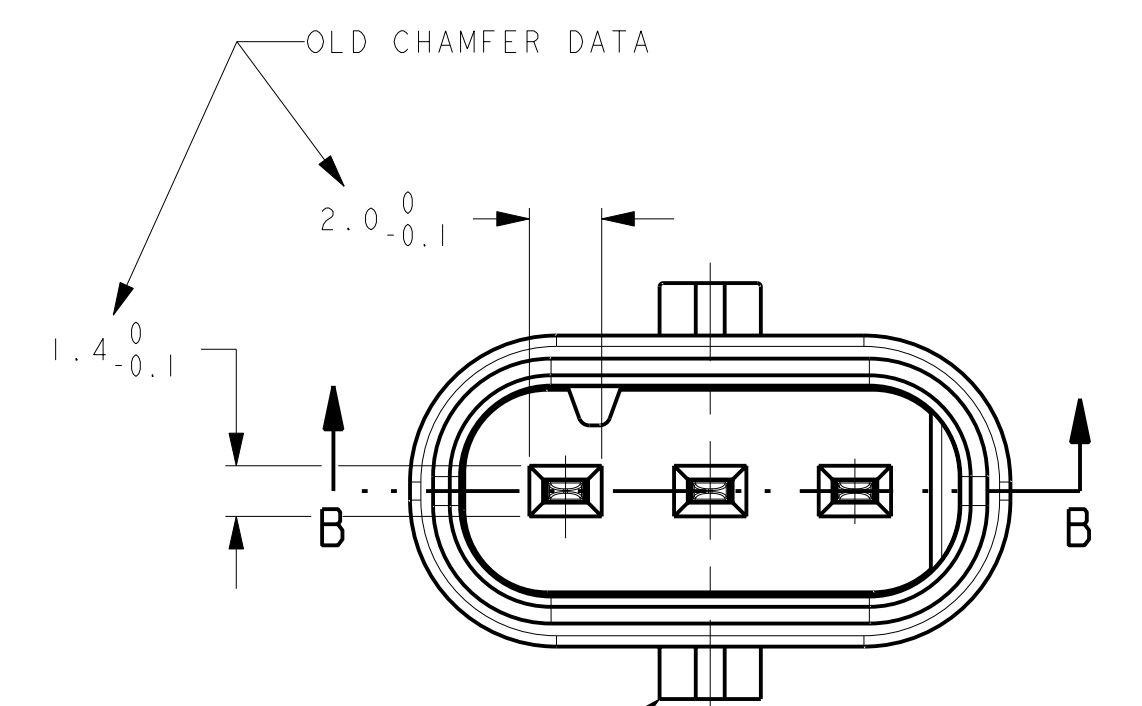
THIS DRAWING, AND PORTIONS OF IT, ARE CONTROLLED BY THE ELECTRICAL WIRING COMPONENTS APPLICATION PARTNERSHIP (EWCAP), A SUBGROUP OF THE UNITED STATES AUTOMOTIVE PARTNERSHIP FOR AUTOMOTIVE ELECTRICAL RECORDS (USAPAR). USAPAR IS A PARTNERSHIP BETWEEN DAIMLERCHRYSLER CORPORATION, FORD MOTOR COMPANY, AND GENERAL MOTORS CORPORATION. IN ORDER TO EFFECT A CHANGE TO THIS DRAWING, A DRAWING, INCLUDING A "RECORD CHANGE," MUST BE APPROVED, IN WRITING, BY THE RESPONSIBLE EWCAP MEMBER FROM EACH COMPANY PRIOR TO THE EWCAP MEMBER SIGNING TO SIGN FOR HIS OR HER COMPANY IS RESPONSIBLE FOR OBTAINING ALL NECESSARY APPROVALS WITHIN THAT COMPANY PRIOR TO SIGNING EACH DRAWING. A RECORD CHANGE EWCAP EXPRESSLY PROHIBITS ANY PARTY FROM CHANGING EITHER ANY EWCAP CONTROLLED PORTION OF THIS DRAWING OR ANY ASSEMBLY OR TOOLING DRAWING WITHOUT AN APPROVAL SIGNED BY AN AUTHORIZED REPRESENTATIVE FROM EACH EWCAP PARTNER. REFERENCE TO THE SIGNED APPROVAL FORM MUST BE ENTERED IN THIS DRAWING'S CONTROL COLUMN.



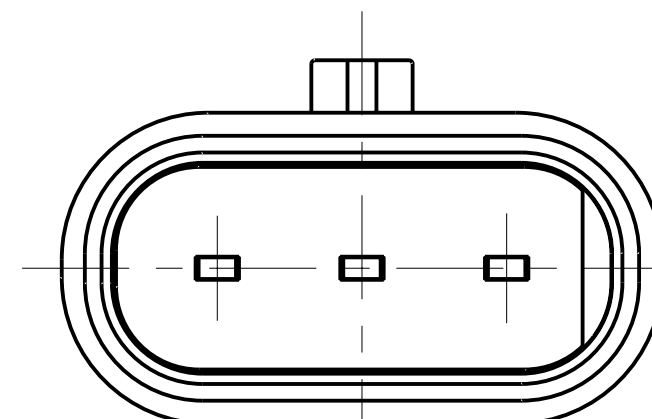
LATCH CONSTRUCTION



SCALE 2:1

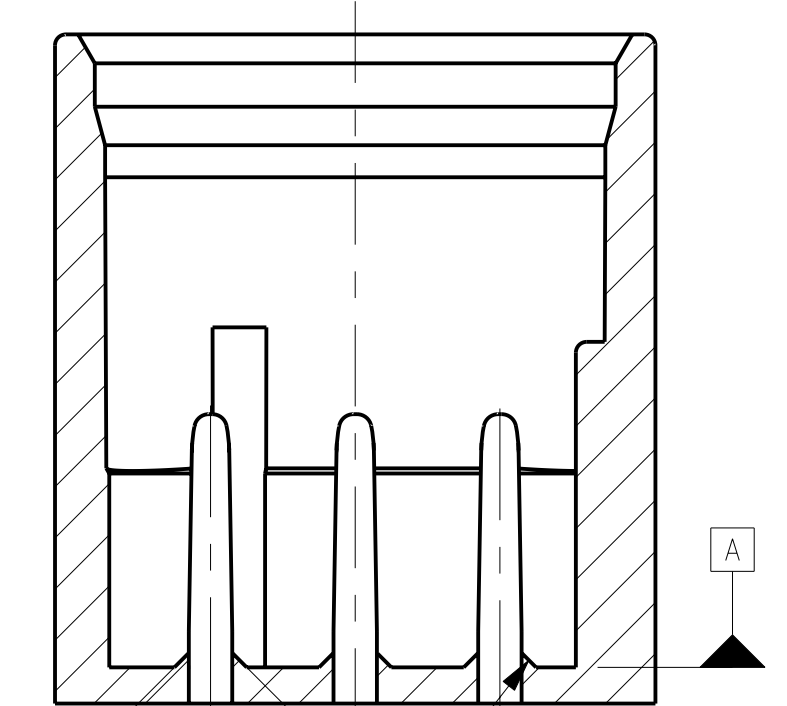


—SECOND LOCK UP FEATURE NOT TO BE INCLUDED ON NEWLY TOOLED HEADERS. BUT THIS FEATURE MAY BE PRESENT ON OLDER HEADERS.



KEYING OPTION Z

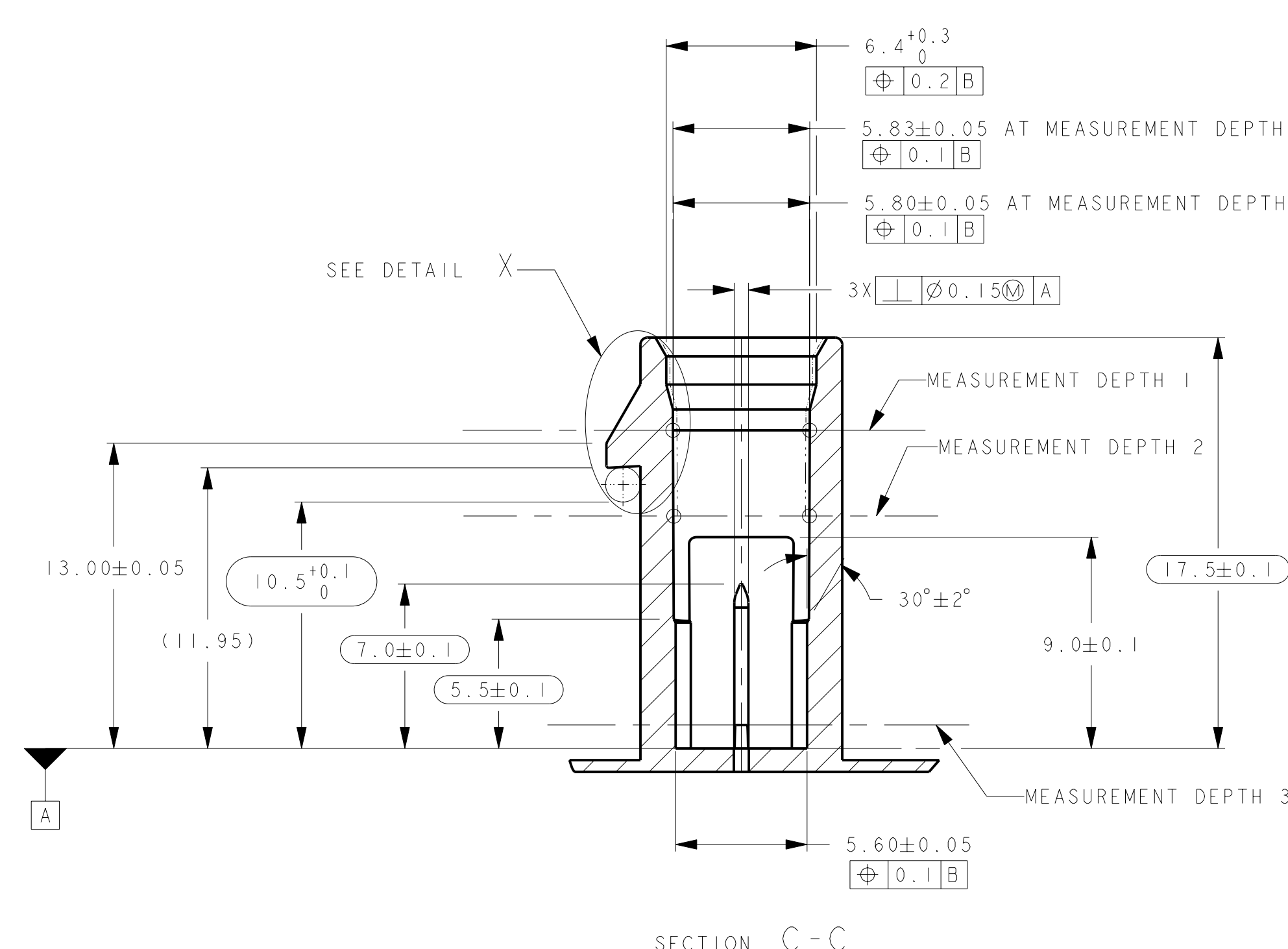
THIS UNIVERSAL KEY OPTION IS NOT APPROVED BY USCAR/EWCAP FOR USE ON ORIGINAL EQUIPMENT DEVICES. HOWEVER, THIS KEY OPTION COULD BE ENCOUNTERED ON OLDER DEVICES.



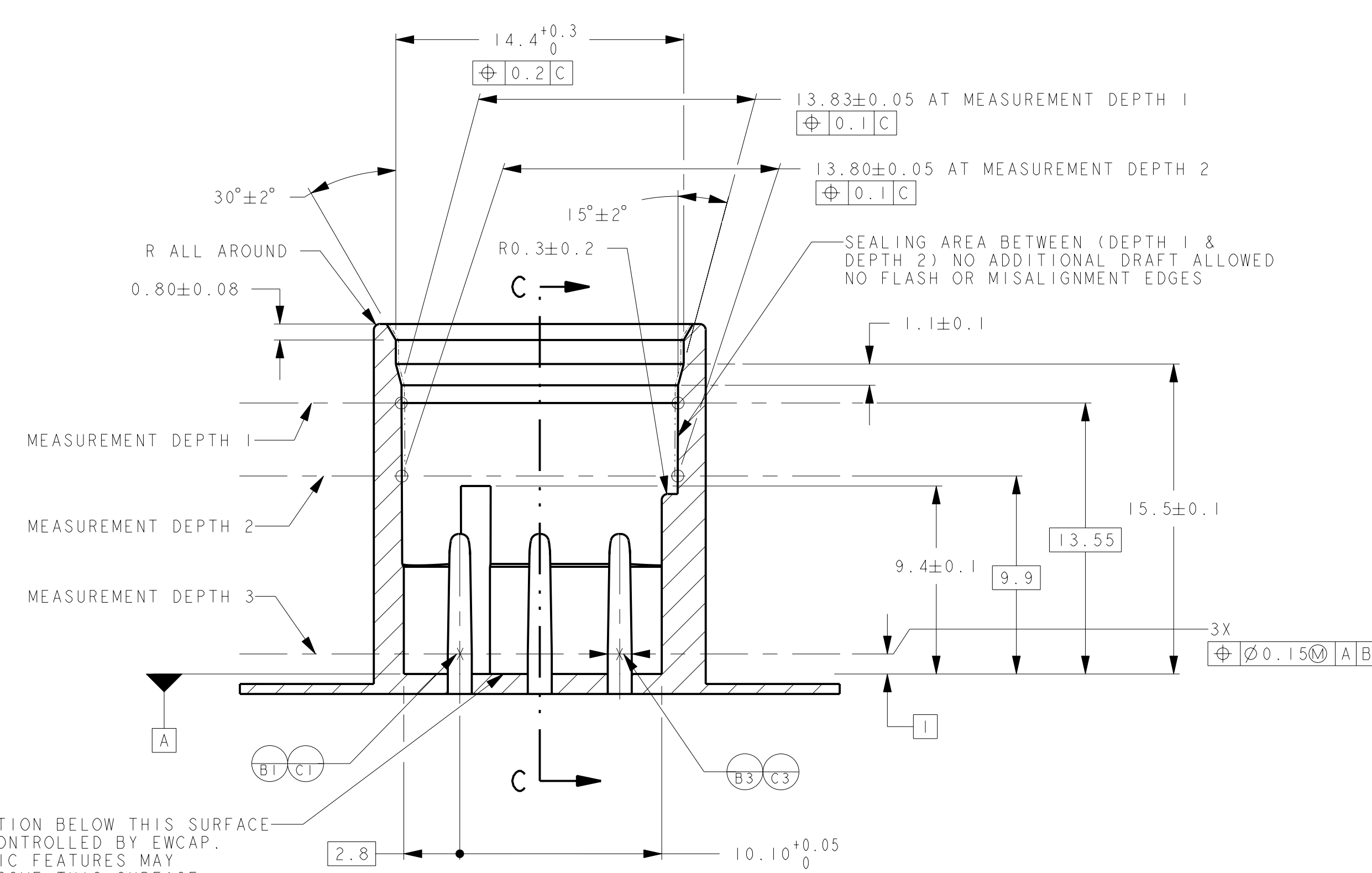
OLD CHAMFER DATA — TERMINAL CHAMFER FEATURE NOT TO BE INCLUDED ON NEWLY TOOLED HEADERS, BUT THIS FEATURE MAY BE PRESENT ON OLDER HEADERS.

SECTION B-B

PROVIDED FOR INFORMATIONAL PURPOSES ONLY

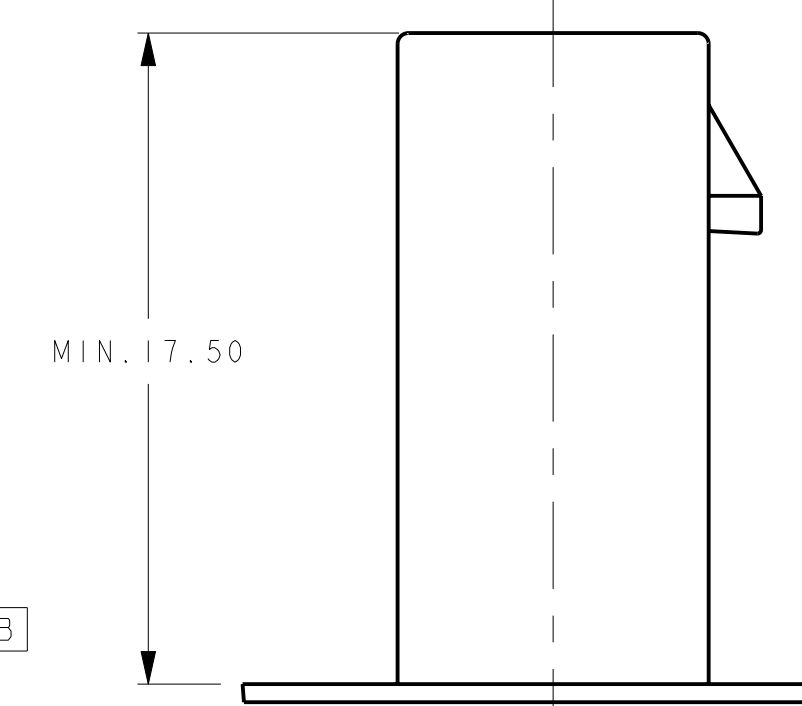


SECTION C-C



SECTION B-B

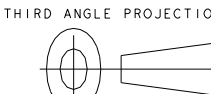

CONSTRUCTION BELOW THIS SUR
IS NOT CONTROLLED BY EWCAP.
NO PLASTIC FEATURES MAY
EXTEND ABOVE THIS SURFACE



MIN. 17.50

NOTES: UNLESS OTHERWISE SPECIFIED

1. ALL DIMENSIONS SHOWN IN MILLIMETERS.
2. DIMENSIONING AND TOLERANCING PER ASME Y14.5M-1994
3. RADIUS ON ALL CORNERS SHOWN SHARP OR ALL UNSPECIFIED RADIUS: 0.25 EXCEPT AS NOTED.
4. A FULL SHROUD ON THE MATING CONNECTOR IS REQUIRED TO INSURE THAT THE CONNECTOR-HEADER POLARIZATION FEATURES (OPTIONS A THRU F) WILL FUNCTION. THE FULL SHROUD ALSO PREVENTS SCOOP DAMAGE TO THE HEADER PLATE. PLEASE REFER TO THE CONNECTOR DESIGN GUIDE LINES" FOR ADDITIONAL INFORMATION.
5. REFER TO USCAR/EWCAP PART LIST AS FOUND ON WEBSITE [HTTP://WWW.USCARTEAMS.ORG](http://www.uscarteams.org)
6. FOR BLADE BASE MATERIAL, PLATING AND PROCESS LUBRICANT SEE EWCAP DRW. NO. EWCAP-001
7. THIS PART HAS BEEN PREVIOUSLY DESIGNED AND TOOLED WITH THE DATUM REFERENCES AS SHOWN. THE DATUM REFERENCE USED IN THIS DRAWING IS THE DATUM REFERENCE OVER THE EWCAP DRAWING GUIDELINE DATUM REFERENCE REQUIREMENT.

082	B	ADDED KEYING OPTIONS E & F AND ADDED NOTE OR CONSTRUCTION BELOW DATUM A	05-18-10	SR	FAH
-	A	RELEASED	01-08-09	SR	FAH
CHANGE SERIAL NUMBER	LET	REVISION RECORD	DATE	DWN	CHK
TOLERANCES (UNLESS OTHERWISE SPECIFIED):			THRU ANGLE PRODUCTION		
DIMENSIONS ARE IN MILLIMETERS					
ANGLES ± 2°					
X, X ± 0.25			X, XX ± 0.10		
					
					
SCALE	5:1	DRAWN BY	RANGARAJAN	CHECKED BY	FRANK HOLUB
		DATE	11-19-2008		
TITLE					
DIRECT CONNECT INTERFACE 3 WAY (1 X 3) 1.2MM SEALED MALE					
SHEET	DRAWING NUMBER		SIZE	DATE	REVISION LEVEL
001	120-S-0003-1-202		E	DO NOT SCALE DRAWING COMPUTER AIDED DRAWING	B

